



From Montreal to Quebec City

Michel Sacco

Parc nautique de Contrecoeur

INTRODUCTION

Quebec City, the main channel is often used by commercial ships. Its minimum width is 244 m. Navigation is open year-round on the St. Lawrence up to the Port of Montreal.

Between Montreal and Sorel, there are two channels for small boats to keep them apart from commercial shipping. On the north, the Chenal des Plaisanciers begins at Île Sainte-Thérèse and rejoins the main channel at Lanoraie. Lighted buoys mark this 22-mile-long channel, but most of the leading lights have been removed. The strength of the current ranges from 1.2 to 1.9 knot and the minimum depth is 1.70 m.

The Chenal du Sud is marked by lighted navigational aids and runs along the shore for 7 miles between Longueuil and Varennes. Overhead clearance at the Hyppolite-Lafontaine Bridge is 9.75 m and minimum depth is 1.80 m. The Chenal du Sud runs for 4.5 miles east of the Îles de Contrecoeur. It is marked but unlit and very narrow.

Downriver from Montreal, the river is relatively narrow and flows between a series of low-lying and often very picturesque islands. The north-shore islands between Pointe-aux-Trembles and Repentigny, at the mouth of the Rivière des Prairies, will take you away from the hustle and bustle of the nearby city. The channels between the islands are navigable, but only the channel that runs north of Île à l'Aigle is marked. It will lead you to the Rivière des Prairies.

At Sorel begins the Archipelago of Lake St. Pierre. This delta encompasses a multitude of islands and channels that form an ecological area of prime importance. It has recently been made in 2000 one of UNESCO's world biosphere reserves. Lake St. Pierre is the last natural widening of the river and is the largest of the lakes on the St. Lawrence. It's shallow, 16 miles long, and 6 miles wide. Because of its low-lying shores, you'll be unable to stop and go ashore before Nicolet. Just before Trois-Rivières, the river narrows again and the shores rise more steeply.

Water levels

The water level is usually lowest around mid-September. The exceptionally low levels in 2001 hindered access in many channels to plea-

sure-boat harbours. Contact the harbour masters to find out the access conditions. The Canadian Hydrographic Service provides toll-free reports

on water levels from Montreal to Île aux Coudres. Call 1 877 775- 0790 or visit the website www.cartes.gc.ca.

Currents and tides

Between Montreal and Trois- Rivières, the speed of the current ranges from 0.5 to 2 knots, depending on the area. Starting at Trois-Rivières, the tide begins to affect water levels, but the flood current becomes apparent only at Deschailions. The channel narrows between Portneuf and Deschailions. This narrowing is called the Richelieu Rapids. It's a tricky passage where the ebb current often exceeds 5 knots.

Location	Mean speed of flood curr.	Mean speed of ebb curr.	Duration of flood current	Duration of ebb current
Trois-Rivières	0.0 knot	1.6 knot	0 h	12 h
Batiscan	0.0 knot	2.2 knots	0 h	12 h
Richelieu Rapids	1.0 knot	5.0 knots	2 h	10 h
Portneuf	0.8 knot	2.0 knots	2 h 30	9 h 30
Neuville	1.8 knot	2.6 knots	4 h	8 h

Planning your route from Trois-Rivières to Quebec City

To make the most of the ebb current on your way to Quebec City and to avoid fighting the flood current, carefully choose your time of departure from Trois-Rivières. When going in the opposite direction from Quebec City, aim to go through the Richelieu Rapids with the flood current. It's virtually impossible to fight your way through these rapids at the peak of the ebb current without a heavy-duty motor, especially if you're also bucking the wind.

Speed	Trois-Rivières departure time	Quebec City departure time
6 knots	8 h before LT at Quebec City	LT at Quebec City
10 knots	5 h before LT at Quebec City	1 h 30 before HT at Quebec
15 knots	4 h before LT at Quebec City	30 min before HT at Quebec

Distances

Montreal/Quebec City **137 nautical miles**
Montreal/Sorel 37 nautical miles
Sorel/Trois-Rivières 32 nautical miles

Trois-Rivières/Portneuf 34 nautical miles
Portneuf/Quebec City 34 nautical miles

Charts and documents

- CHS charts 1310 (new edition 2008), 1311 (new edition 2008), 1312 (new edition 2007), 1313 (new edition 2007), 1314 (new edition 2008), 1315 (new edition summer 2008), 1316.
- Sailing Directions: St. Lawrence River, Cap-Rouge to Montréal and Rivière Richelieu, ATL 112, 3rd edition published in 2009.
- Sailing Directions: St. Lawrence River, Île Verte to Québec and Fjord du Saguenay, ATL 111, 3rd edition published in 2007.
- Canadian Tide and Current Tables Vol. 3.
- Atlas of Tidal Currents.

Vessel Traffic Marine Services frequencies

- From Montreal to Tracy: Quebec station VHF channel 10.
- From Tracy to Saint-Nicolas: Quebec City station VHF channel 13.
- From Saint-Nicolas to Quebec City: Quebec City station VHF channel 12.

Montreal

When leaving the Seaway, sail around Île Sainte-Hélène, proceed upriver, and head to the Old Port facilities. You'll avoid the worst of the Sainte-Marie Current (4 to 6 knots) by staying close to the wharves. The Clock Tower is a visible landmark. The Port d'escalier is reserved for temporary stopovers. The new Montreal Yacht Club, in the Clock Tower basin, allows longer stays.



Port d'escalier of the Quays of the Old Port of Montreal

VHF 68 • 514 283-5414

45°30.40'N – 73°32.70'W

The basin is west of the Jacques-Cartier Wharf, across from Pointe du Havre. It used to be a commercial ship basin and has since been turned into a hub of tourism and recreation in downtown Montreal. This deep water basin has plenty of manoeuvring room and is very well protected. Infrastructures and facilities are top-rate. The reception staff do an excellent job. On weekends, it's best to reserve a berth, this place being very popular. There's an hourly rate for short daytime stopovers. The site is very lively and has all kinds of cultural and entertainment activities within a short walk from the Old City.

- Maximum length: 60 m
- Total berths/visitor berths: 100
- Depth: 10.70 m
- Services: water and electricity (30, 50 and 100 A), restrooms and showers, ice, laundry, toilet pump-out, fuel upon request for vessels over 25 m, monitored site, magnetic card access, valet service for baggage transport, wireless Internet (free).



Montreal Yacht Club

VHF 68 • 514 789-9264

45°30.80'N – 73°32.80'W

The Clock Tower indicates the entrance to the basin. A floating breakwater, with flashing lights, is moored to the basin entrance to buffer the effects of wave action. This new pleasure-boat harbour has been open since 2007. Washroom facilities and the harbour master's offices have been set up on the west wharf in a former shed. On the same wharf, a new building is home to a restaurant and a boat dealer's offices. The site provides a scenic view of the



Old Port of Montreal.

downtown and is more peaceful than the port of call.

- Maximum length: 26 m
- Total berths/visitor berths: 205/40
- Depth: 7 m
- Services: water and electricity (30 and 50 A), restrooms and showers, laundry, mobile toilet pump-out, restaurant/terrace, secure access,

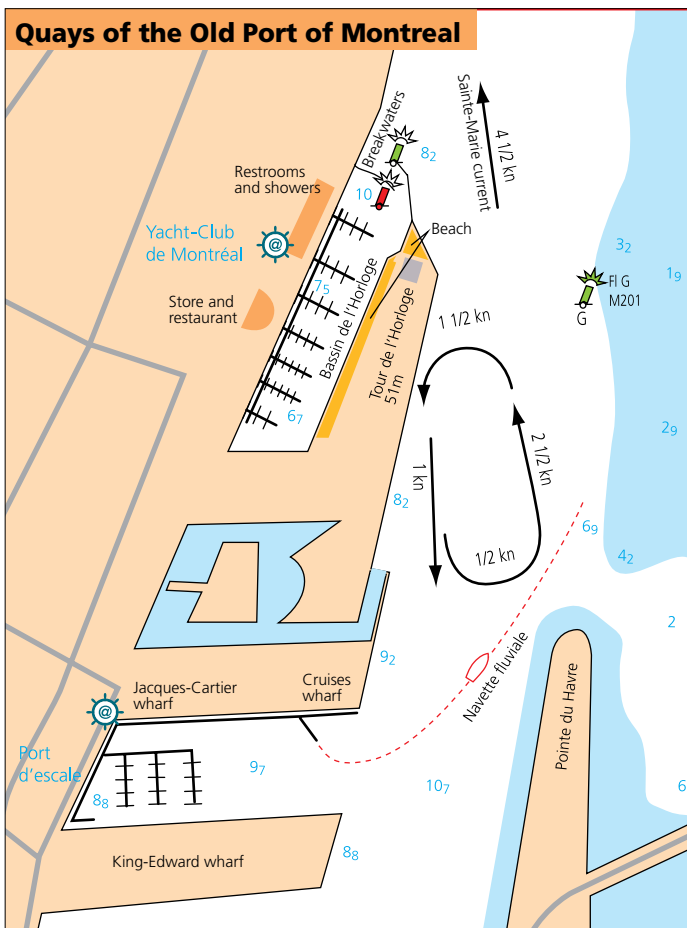
wireless Internet on the wharves.



Marina de la Ronde

VHF 68 • 514 875-0111

45°31.70'N – 73°31.93'W [Green light] The marina is southeast of Île Sainte-Hélène, immediately when you leave the South Shore Canal, near an amusement park. A strip of



land protects the basin, which has two entrances. There's more water in the southern channel and basin (3 m) than in the northern ones (2 m).

- Total berths/visitor berths: 175/75
- Depth: 2.10 m
- Services: water, electricity (15, 30, and 50 A), gasoline and diesel, restrooms, showers, laundry, toilet pump-out, ice, launching ramp, picnic area with BBQ, wireless Internet.

Longueuil



Club nautique de Longueuil

VHF 68 • 450 646-0197

45°32.30'N – 73°31.38'W [Green buoy (MT 85)]

The boating club has its facilities in two separate basins that look like dug canals. The north basin has a bit more manoeuvring room. The wharves are open to the river and some berths are subject to wave action. Family atmosphere.

- Total berths/visitor berths/anchorages: 90/ 15/12
- Depth: 1.80 m
- Services: water and electricity (30 A), restrooms and showers, laundry, common room, launching ramp, masting crane.



Port de plaisance Réal-Bouvier

VHF 68 • 450 442-9575

45°32.67'N – 73°31.34'W [Green buoy (MT 79)]

From the commercial channel, a channel marked by private lighted navigational aids will lead you into a large basin that is well protected by a breakwater. The current flows north. Carefully follow the naviga-



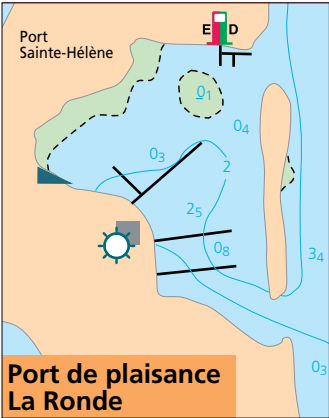
Montreal Yacht Club.



Port de plaisance de la Ronde



Port de plaisance Réal-Bouvier.



tional markers of the main channel by coming from downriver, to avoid the southshore shoals, until you get

to the MT79 buoy. This is a modern and fully equipped pleasure-boat harbour with quality services. The

wharves were rebuilt in 2004. A walkway enables pedestrians to get to Vieux-Longueuil and its many restaurants in a few minutes. A bike path runs along the shoreline and a hiking trail leads to Pointe du Mariot, where you can see the fauna and flora. There are picnic areas in Parc Marie-Victorin. A river shuttle service provides transportation to the Old Port of Montreal.

- Maximum length: 24 m
- Total berths/visitor berths: 425/25
- Depth: 2.10 m
- Services: water and electricity (15, 30, and 50 A), gasoline and diesel, restrooms and showers, laundry, toilet pump-out, gantry crane, machine shop, bar/restaurant, swimming pool, convenience store, marine store, winter boat storage, recreational vehicle park.

Boats provide a **shuttle service** between Longueuil, the Old Port of Montreal, and Île Charron.

Îles de Boucherville

There are a few places here, on the Chenal du Sud, where you can put in.

Île Charron

There is a landing on the island's south shore just downriver from the Hippolyte-Lafontaine Bridge.

Grande Rivière

You can find sheltered and popular anchorages in the channel between Île Sainte-Marguerite and Île à Pinard and on either side of Île Saint-Jean.

Club nautique de Boucherville

VHF 68 • 450 655-9247
45°36.70'N – 73°27.50'W

A series of landing stages are installed in the Chenal du Sud, just across from the old town whose rich architectural heritage is worth a look. Restaurants and services nearby.

- Total berths/visitor berths: 99/20
- Depth: 9 m
- Services: water and electricity (30 A), gasoline, restrooms and showers, launching ramp, restaurant nearby, wireless Internet.

Club de voile de Mézy

45°38.00'N – 73°28.15'W

This private sailing club might be



Club nautique de Boucherville.

open to visitors. Boats are tied to permanent moorings. A service wharf is available for temporary stopovers.

- Depth: 3 m.

Pointe-aux-Trembles

A secondary channel, marked by unlighted navigational aids, runs to the west of Île Sainte-Thérèse. It will lead you to the mouth of the Rivière des Prairies and then continue to Repentigny where it rejoins the Chenal des Plaisanciers further downriver.

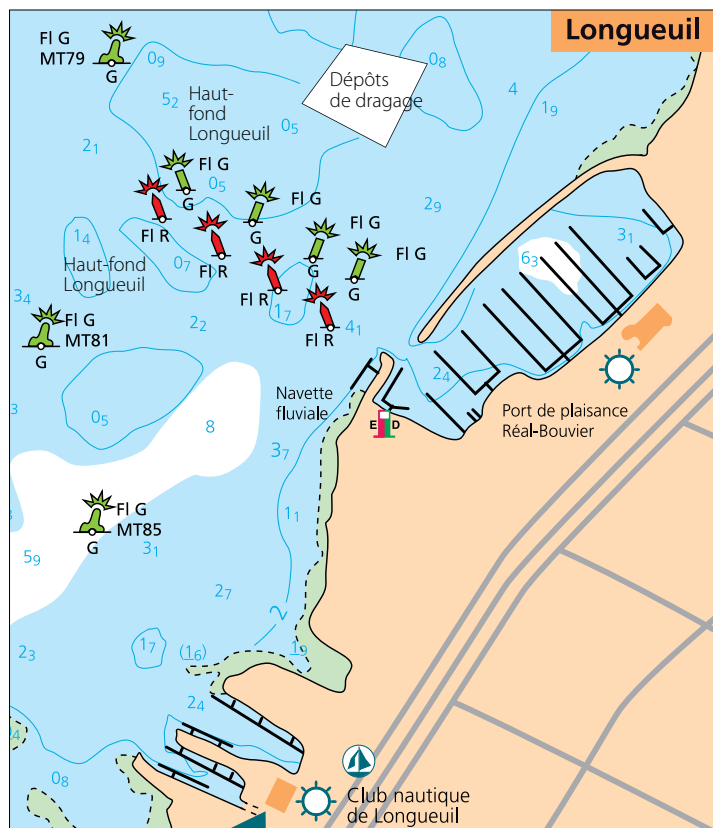


Marina de Pointe-aux-Trembles

514 645-4400
45°38.95'N – 73°29.10'W

The marina is west of an islet that protects it well. Sail along the north side of the mudflats for a half-mile until you come to a VEAU bifurcation buoy. You can then enter the access channel, which is a bit upriver. Some permanent moorings are also available.

- Total berths/visitor berths: 99/15



- Depth: 4 m
- Services: water and electricity (30 A), gasoline, restrooms and showers, toilet pump-out, machine shop, launching ramp, boat storage, marine store, mechanical/fibreglass repair shop.



Marina Bo-Bi-No 450 666-1395

45°42.10'N – 73°29.10'W

The facilities are upstream Rivière des Mille-Îles less than a half mile from Bout-de-l'Île. From the AIGLO mid-channel buoy, sail upriver through a channel marked by private navigational aids that are unlighted but have reflective strips. Landing stages are between the two bridges (highway and rail) on the south shore.

- Total berths/visitor berths: 50/5
- Depth: 1.80 m
- Services: water and electricity (15 A) machine shop, marine store, haulout equipment, boat storage, restrooms and showers, launching ramp, rowboat rental.



Île Saint-Laurent

45°43.55'N – 73°25.85'W

The channel between two islands, Île Saint-Laurent and Île Annexe, is



Marina de Repentigny,



Marina de Repentigny 450 581-7071

45°43.80'N – 73°26.70'W [Red buoy (MV6)]

- Total berths/visitor berths: 105/10
- Depth: 1.5 m
- Services: water and electricity, gasoline, restrooms and showers, launching ramp, machine shop nearby.

Verchères Islands stretch on 8 miles in a charming microcosm when farming is still active. A small population of 40 people live on the islands during the Summer.

Chenal Saint-Pierre is marked and links the Seaway to the chenal des Plaisanciers. It goes through Boucard and Marie islands in a charming landscape and 1,50 m depth. This channel may be impractical at low water.

You can drop anchor on the south shore in pleasant surroundings behind Bœufs islands (45°48,66'N – 73°19,48'W) and Prunes islands (45°47,44'N – 73°20,66'W).

On the north shore, you can tie on the docks of Seigneurie de l'île Ronde.



Marina de la Rive-Nord VHF 68 • 450 585-1125

45°45.80'N – 73°25.00'W

Northwest of Île Beauregard.

- Total berths/anchorages/visitor berths: 96/50/10
- Depth: 2 m
- Services: water and electricity, restrooms and showers, marine store, mechanical and general repair shop, convenience store nearby, wireless Internet.

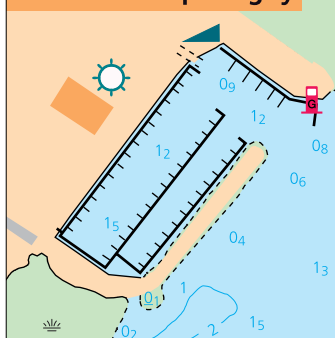


Marina Brousseau VHF 68 – 450 589 7272

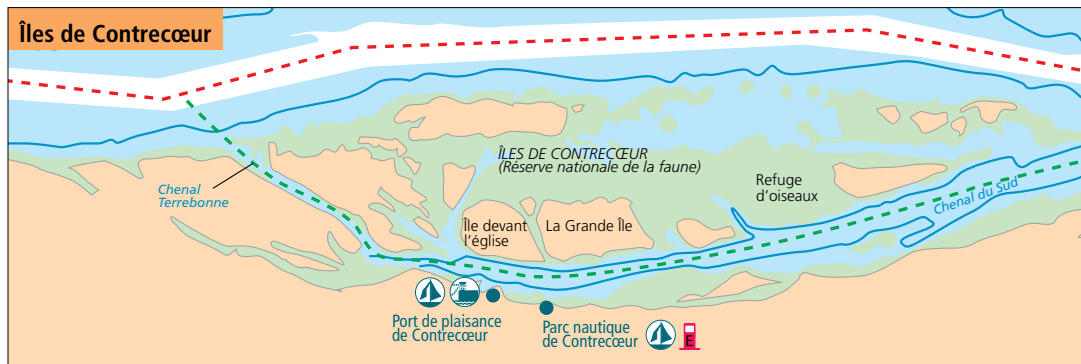
Located on the north shore.

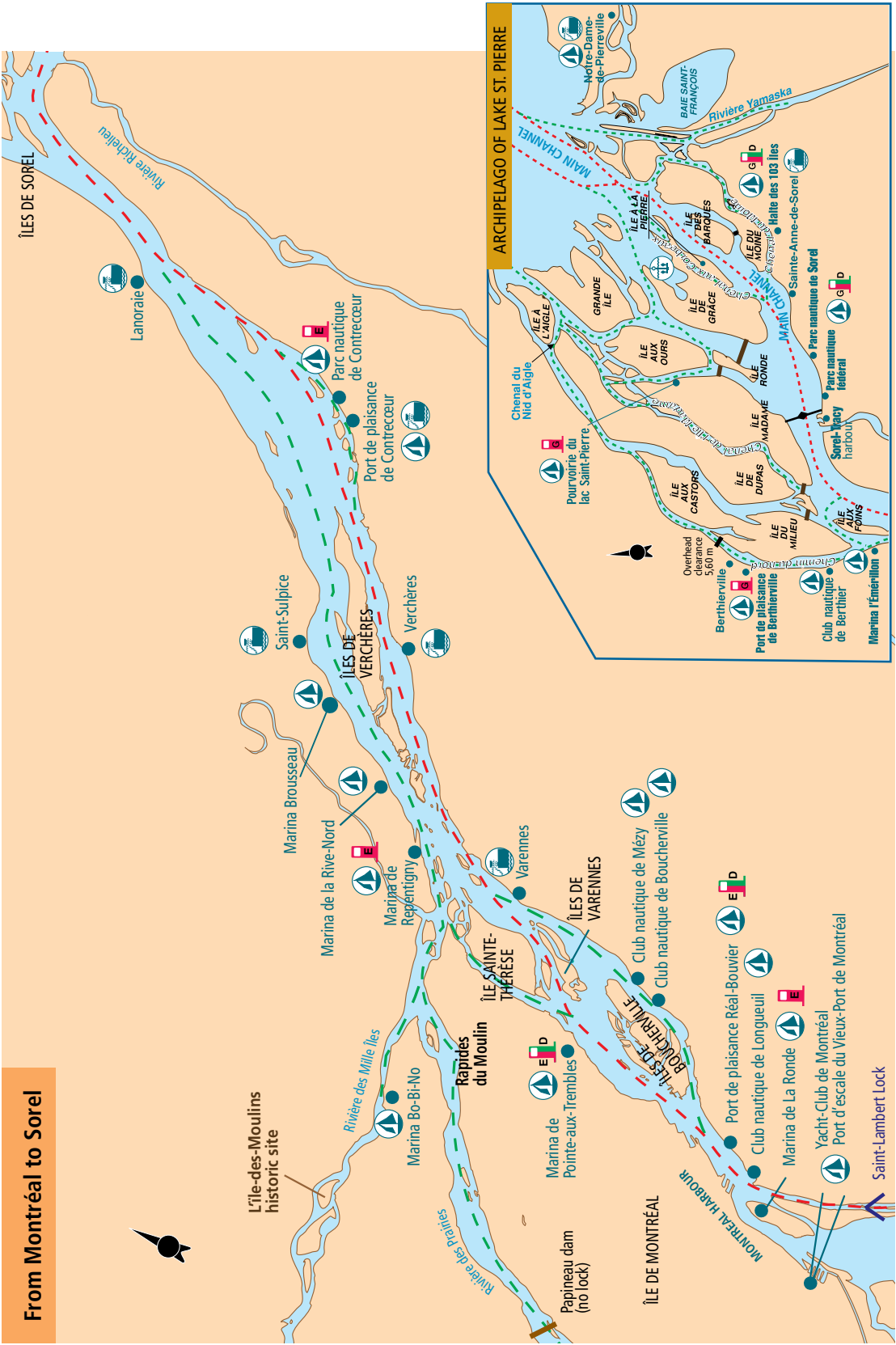
- Berths: 99
- Depth: 3 m
- Services: Electricity (30&50A), marine store, repairs, restaur-

Marina de Repentigny



Îles de Contrecoeur





rant, swimming pool, pump-out, launching ramp.



Verchères

A small basin for local boaters.
No services.
Depth: 1,20 m to 1,50

Contrecoeur

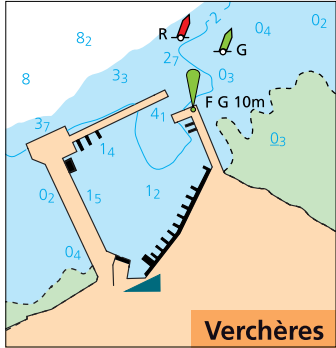
The îles de Contrecoeur, a series of low-lying islands, are a national wildlife area. You cannot land here, but you may drop anchor near the large beds of aquatic plants. Two marinas and a public wharf are in this area. The islands provide good protection. To access the islands from upriver, start at the M51 buoy and enter the narrow but marked Chenal Terrebonne. To access them from downriver, start at the M19 buoy and enter the Chenal Sud, which is less constricted than the other one and is marked by unlighted navigational aids.



Public wharf

45°51.50'N – 73°14.45'W

The wharf now has a rock-fill embankment and landing stages where you can put in for a maximum of 2 h. The site is attractive and in the heart of town.



Port de plaisance de Contrecoeur



Parc nautique de Contrecoeur



Port de plaisance de Contrecoeur

VHF 68 • 450 587-2569

45°51.70'N-73°14.40'W

Just east of the public wharf, right in the town centre and near services.

- Total berths/visitor berths: 80/10
- Depth: 4 m
- Services: water and electricity, restrooms and showers, restaurant, toilet pump-out, gasoline nearby, mechanic on call, sea kayak rental, launching ramp.



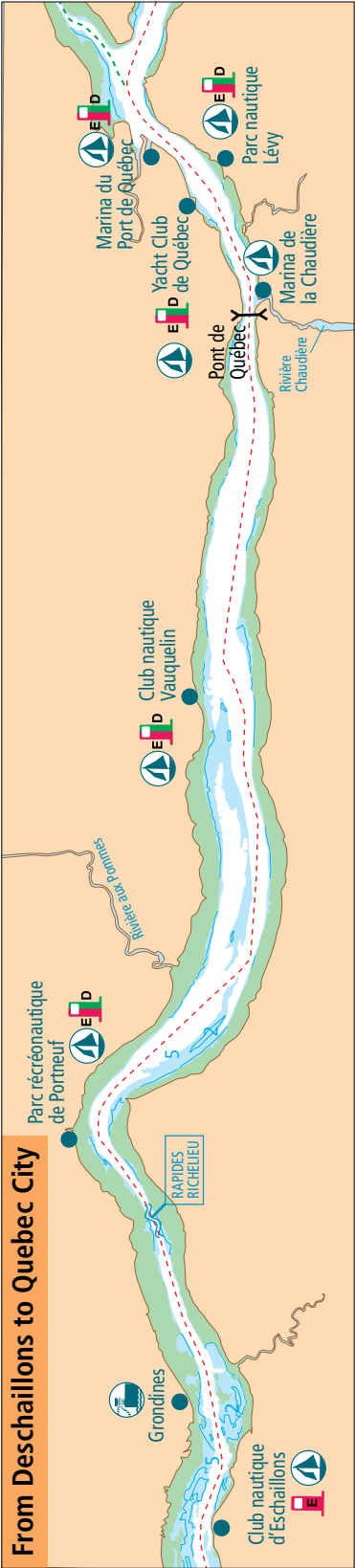
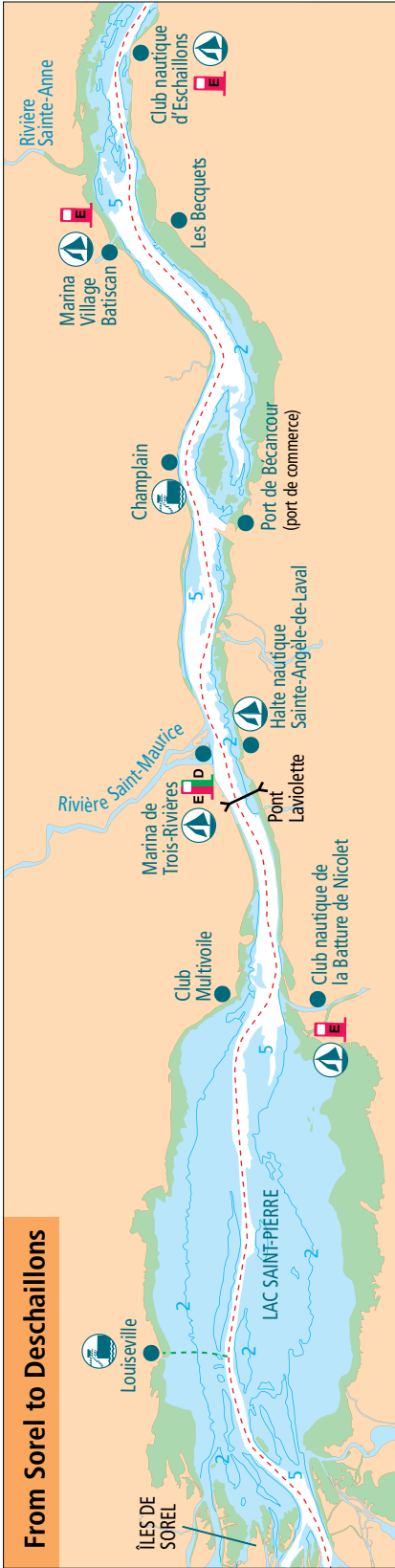
Parc nautique de Contrecoeur

VHF 68 • 450 587-5495

45°51.80'N-73°13.88'W

Just east of the preceding marina.

- Total berths/visitor berths: 60 4/6
- Depth: 4 m
- Services: water and electricity, gasoline, restrooms and showers, toilet pump-out, mechanic on call.



FROM SOREL TO NICOLET

Archipelago of Lake St. Pierre

NAVIGATION

Eight channels cross the archipelago between Sorel and Lake St. Pierre. Besides the main channel, which commercial ships use, three channels are open to navigation, the others being obstructed by stone dams built in the late 1920s to maintain the water level upriver. Warning buoys indicate these often submerged dams. The **Chenal du Nord** (12 miles long) is accessible upriver from Île aux Foins, which is across from Tracy. At the town of Berthierville, a highway bridge limits overhead clearance to 5.60 m. The channel flows into Lake St. Pierre at Île à l'Aigle.

The Chenal aux Corbeaux runs north of Île Lapierre and links up with the other navigable channels that are dammed further upriver: Grand Chenal, Chenal aux Ours, Chenal de la Batture aux Carpes, and Chenal des Îles aux Sables. It has a minimum of 5 m of water with no bridges overhead. Finally, the Chenal du Moine runs south of Île au Moine and joins the Chenal des Raisins and the Rivière Yamaska. It has very little water in its eastern portion and is generally accessible only to boats with very shallow draft.

WARNING

Speed is limited to 5 km/h or 10 km/h in the Chenal aux Corbeaux and the Chenal du Moine in order to protect the shorelines from wake erosion.

Chenal du Nord

About a mile downriver from the Tracy thermal power station are unlighted buoys that indicate the channel entrance, a mile upriver from Île aux Foins. The channel is no longer marked further downriver. The Marina l'Émerillon and then the Club nautique de Berthier are located across from Île du Miton in 4 m of water. They have a few berths for

visitors in a nice setting and with the usual services.



Port de plaisance de Berthierville

VHF 71 • 450 836-7636

46°05.00'N – 73°10.30'W

Mainly motorboats use the harbour. It provides superb facilities and good protection in downtown Berthierville. There are a few very nice restaurants

within a short walk from the marina and quaint old homes by the river.

- Maximum length: 15 m
- Total berths/visitor berths: 80/10
- Depth: 2.50 m
- Services: water and electricity (30 A), gasoline, restrooms and showers, toilet pump-out, laundry, restaurant, launching ramp.

Sorel-Tracy

The two pleasure-boat basins are run by the same entity. Both are just east of the Richelieu's mouth.



Federal Nautical Park

VHF 68 • 450 743-2454

The town centre is a short walk from the marina. Sailboats going to and from Lake Champlain can use the masting crane.

- Maximum length: 9 m
- Total berths/visitor berths: 230/5
- Depth: 1.40 m
- Services: gasoline and diesel, restrooms and showers, ice, BBQ, launching ramp, masting crane, service 24 h.



Parc nautique de Sorel

VHF 68 • 450 742-9056

46°03.15'N – 73°05.60'W [Red buoy (SN24)]

To access the marina basin, follow the channel marked by buoys and leading lights to avoid the shoal across from the entrance. The marina has a full range of services, is well equipped, and is very popular. A good restaurant, l'Auberge de la Rive, is a short walk from the marina.



Port de plaisance de Berthierville.



Marina de Saurel.

- Maximum length: 18 m
- Total berths/visitor berths: 250/10
- Depth: 1.50 m
- Services: water and electricity (15, 30, and a few 50 A), gasoline and diesel, toilet pump-out, restrooms and showers, laundry, swimming pool, ice, BBQ, bike loan, launching ramp, marine store nearby, service 24 h.



Sainte Anne-de-Sorel

46°03.60'N - 73°04.10'W

A public wharf and a pier form a small basin. At the end of the basin is a launching ramp. The north side of the wharf has 2 m of water but is very exposed to waves. Less than 1 m of water in the basin.



La Halte des 103 îles

46°03.90'N 73°01.80'W

[Green buoy (SN11)]

At the entrance to the Chenal du Moine. Not much manoeuvring room in the basin. It's a fairly lively recreational/tourism complex.

- Total berths/visitor berths: 99/30
- Depth: 1.50 m to 2 m
- Services: water and electricity (15 A), gasoline, diesel, propane, restrooms and showers, toilet pump-out, laundry, machine shop, bar, restaurant, convenience store, swimming pool, spa, launching ramp, boat rental.

Stopovers in the archipelago

The archipelago is a unique natural environment that has retained its wild nature. The many marshlands and the large beds of aquatic plants are home to plenty of seabird colonies. The current is weaker in the secondary channels than in the main channel.



Baie de l'île de Grâce

46°06.20'N - 73°00.20'W

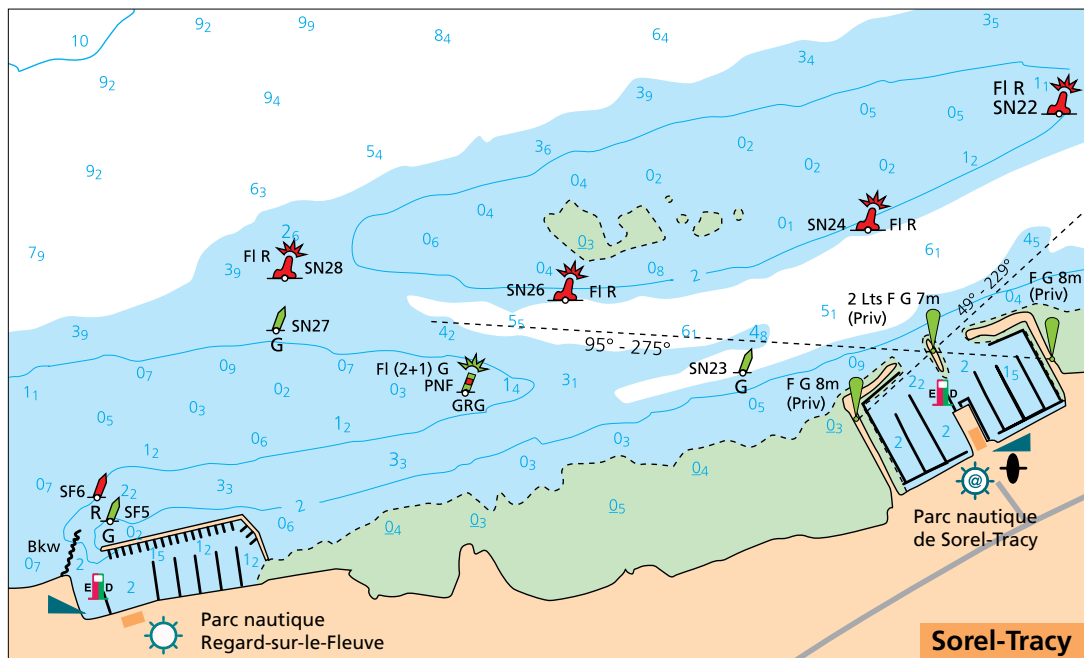
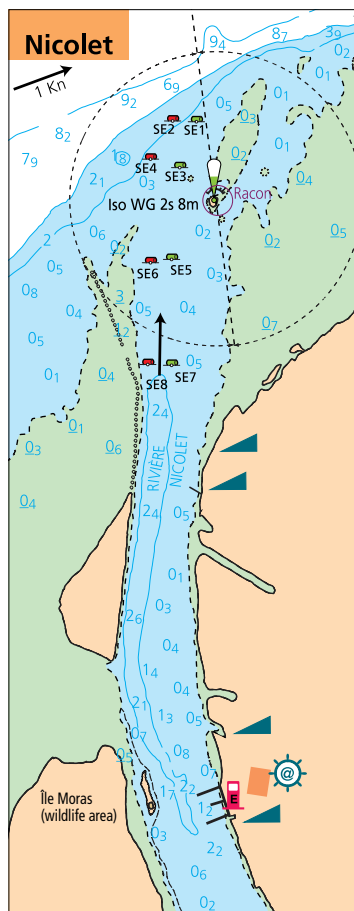
This magnificent anchorage is very well protected in a large bay surrounded by aquatic vegetation. You can enter via the Chenal aux Corbeaux. The channel is narrow and very shallow, but the mud bottom will not harm the keel of your boat.



Île aux Sables

46°07.15'N - 73°00.40'W

By sailing around the east end of Île de Grâce, you'll enter the Grand Chenal—the natural channel that used to handle 85% of the river's water flow. It's wide and deep. You can go through it with a sailboat. South of Île aux Sables, just east of a small island whose name is not on the chart, you can drop anchor in 1.80 m of water in attractive surroundings.



Île Madame**Pourvoirie du lac Saint-Pierre**

450 836-7056

46°06.70'N – 73°04.50'W

A wise stopover in the heart of the

archipelago, in the Chenal aux Ours. An attractive site seldom visited by pleasure boats.

- Total berths/visitor berths: 45/10
- Depth: 3 m

- Services: water, gasoline, restaurant, restrooms, showers, convenience store, rowboat rental.



Chenal des îles au Sable.



Baie de l'île de Grâce.



Club nautique de la batture.

LAKE ST. PIERRE NAVIGATION

Crossing Lake St. Pierre on the way to Quebec City may be troublesome if heading into north/northeast winds, which toss up sizeable waves. By midsummer, bulrushes proliferate, especially outside the channel. The current in the channel is 1 knot. The shallow waters make it impossible to stop and go ashore. The only place where you can put in is at Louisville on the north shore. A marked channel leads to a river, the Rivière du Loup, and an outfitting camp. The harbour is good but has very few services and little manoeuvring room. The tide begins to be felt at Trois- Rivières, but the flood current doesn't become apparent until Deschaillons.



Club nautique de la Batture de Nicolet

VHF 71 • 819 293-6912

46°15.54'N – 72°39.50'W [Green buoy (S9)]

The mouth of the Rivière Nicolet is marked by unlighted private navigational aids. A sector light is east of the mouth. The channel silts up easily. Access is tricky for boats that draw a lot of water, especially in late summer. Call the harbour master to find out the water level. You should dock with your bow pointing into the current. The location is nice, suitable for multihulls, and especially popular with motorboats.

- Total berths/visitor berths: 65/10
- Depth: 1.75 m
- Services: water and electricity, gasoline, toilet pump-out, restrooms and showers, laundry, bar and snack bar, launching ramp, permanent mooring, machine shop nearby, wireless Internet.

FROM TROIS-RIVIÈRES TO QUEBEC CITY

NAVIGATION

Between Trois-Rivières and Quebec City, you must follow the shipping channel. Even though the river is wide in several places, it's strewn with mudflats and shoals beyond the buoys. See page ? to synchronize your route with the high tide and the low tide.



Marina de Trois-Rivières

VHF 68 • 819 374-5862
46°21.30'N – 72°30.65'W

The Trois-Rivières marina is in the middle of the Rivière Saint-Maurice delta. A green light stands on the Pointe des Chenaux wharf as well as a sign with the marking MARINA. A channel marked by private (unlighted) navigational aids and a line of leading lights at 253° will lead you straight to the service wharf. Remember that the cross current reaches almost 3 knots. Buoys mark the shoal to starboard, in the northern portion of the basin. There's comfortable manoeuvring room and excellent protection. Facilities are top-rate and can accommodate large watercraft. The magnificent Île Saint-Quentin park is a few minutes away on foot. There are hiking trails and a nice sand beach (swimming allowed) to make your stay enjoyable. Access is free for marina visitors.



Marina de Trois-Rivières.

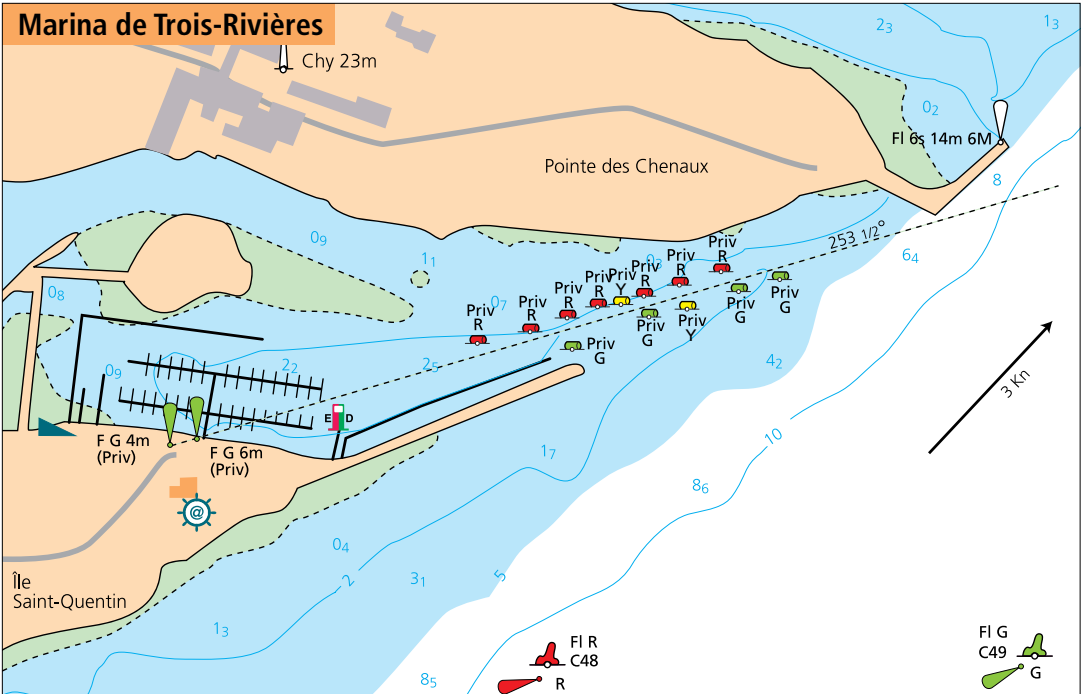
- Maximum length: 43 m
- Total berths/visitor berths: 280/30
- Depth: 2.30 m
- Services: water and electricity (30 A, 50 A, and 100 A), gasoline and diesel, nautical charts, restrooms and showers, toilet pump-out, laundry, restaurant, swimming pool, masting crane, launching ramp, straddle carrier (25 t) for

boat haulout, wireless Internet.



Rivière Saint-Maurice

You can drop anchor in the east and west branches of the Rivière Saint-Maurice. On the west side, you can advance to the Duplessis Bridge and on the east side to the railway bridge. There are two nice sites on the river delta.





Marina de Trois-Rivières

VHF 68 • 819 374-5862
46°21.30'N – 72°30.65'W

The Trois-Rivières marina is in the middle of the Rivière Saint-Maurice delta. A green light stands on the Pointe des Chenaux wharf as well as a sign with the marking MARINA. A channel marked by private (unlighted) navigational aids and a line of leading lights at 253° will lead you straight to the service wharf. Remember that the cross current reaches almost 3 knots. Buoys mark the shoal to starboard, in the northern portion of the basin. There's comfortable manoeuvring room and excellent protection. Facilities are top-rate and can accommodate large watercraft. The magnificent Île Saint-Quentin park is a few minutes away on foot. There are hiking trails and a nice sand beach (swimming allowed) to make your stay enjoyable. Access is free for marina visitors.

- Maximum length: 43 m
- Total berths/visitor berths: 280/30
- Depth: 2.30 m
- Services: water and electricity (30 A, 50 A, and 100 A), gasoline and diesel, nautical charts, restrooms and showers, toilet pump-out, laundry, restaurant, swimming pool, masting crane, launching ramp, straddle carrier (25 t) for boat haulout, wireless Internet.



Rivière Saint-Maurice

You can drop anchor in the east and west branches of the Rivière Saint-Maurice. On the west side, you can advance to the Duplessis Bridge and on the east side to the railway bridge. There are two nice sites on the river delta.



Marina Village Batiscan.

Halte nautique Saint-Angèle

(819 222-5151) is across from Trois Rivières in a small basin that is sheltered on its west side by an old ferry wharf. Depth: 1.50 m.



WARNING

Richelieu Rapids

Between Grondines and Portneuf, the marked channel measures only 250 m wide at its narrowest point. You'll pass by commercial ships. The distance between the two dry banks is around 450 m. Leading lights will guide you through this winding channel where any deviation will take you into rocks. The ebb current lasts 10 hours and the flood current only two hours. The ebb current reaches up to 8 knots at spring tides and the flood current is weak. The current can generate choppy water and eddies. When the wind blows from the northeast, the area is subject to some choppiness. See page ? to plan your route.



Champlain

46°26.40'N – 72°20.40'W

A public wharf poorly protected from the waves. To be used only in emergencies.



Marina Village Batiscan

VHF 71 • 418 362-2722

46°31.20'N – 72°13.00'W [Red buoy (D62)]

Starting at the D62 buoy, a narrow channel, marked by unlighted private navigational aids and a line of leading lights at 274°, will lead you to the river. Take depth soundings in the river's entrance channel at low tide. The facilities are on the north shore less than a half-mile upriver. There's enough room for manoeuvring comfortably. The natural surroundings are attractive.

- Total berths/visitor berths: 75/25
- Depth: 2.70 m
- Services: water and electricity, gasoline, restrooms and showers, toilet pump-out, restaurant, terrace, swimming pool, campground, launching ramp.



Club nautique d'Eschailons

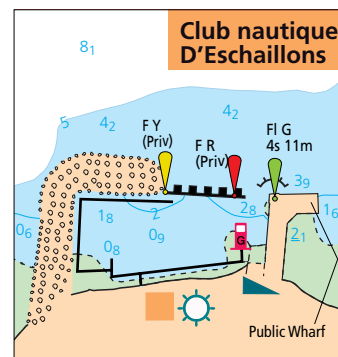
VHF 68 • 819 292-3368

46°33.87'N – 72°06.20'W [Red buoy (D29)]

Private lights on the ends of the wharf and the floating breakwater indicate a small basin west of the public wharf. The entrance is at the west end of the wharf. The basin is



Club nautique D'Eschailons.



protected from the wake of passing ships by a floating breakwater and a rock-fill embankment. Nonetheless, expect your boat to pitch and roll a little. The site is attractive.

- Total berths/visitor berths: 30/7
- Depth: 2 m at low tide
- Services: water and electricity, gasoline (regular and super), restrooms and showers, toilet

pumpout, laundry, restaurant, launching ramp. Beach nearby.



Grondines

46°35.15'N – 72°02.40'W

There is a small basin with a few landing stages and a launching ramp between the public wharf to the east and a pier to the west. No recent data on water depths.



Marina de Portneuf

VHF 68 • 418 286-2263

46°40.85'N – 71°52.65'W

A red light stands at the end of a pier a half-mile long. The entrance channel is northeast of the pier, between two rock-fill embankments. A private light is at the end of the east breakwater. The basin has excellent protection and enough room to manoeuvre in comfortably. The facilities are very nice. The harbour master's office has a cosy lounge and a restaurant dining room with a beautiful view of the river. You can borrow a bike for going into town to buy groceries.

- Maximum length: 21 m
- Total berths/visitor berths: 65/10
- Depth: 2.70 m at low tide
- Services: water and electricity (15 and 30 A), restrooms and showers gasoline and diesel, bar, restaurant, laundry, toilet pump-out, launching ramp, wireless Internet.

Neuville



Club nautique Vauquelin

VHF 68 • 418 876-2185

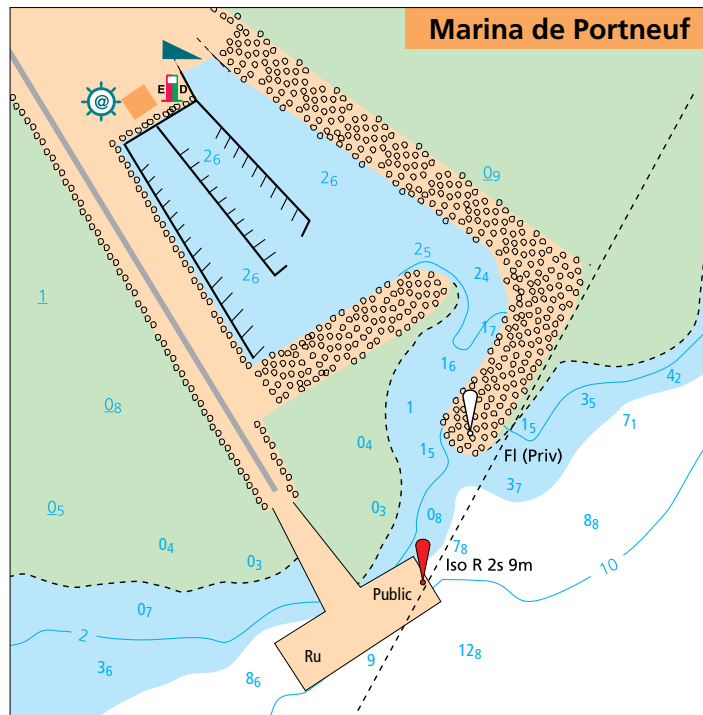
46°41.25'N – 71°33.80'W [Yellow buoy (Vauqu)]

A line of leading lights at 321° will guide you into the basin from the lighted Vauqu buoy (private). A red light is at the end of the eastern rock-fill embankment. A landing stage section has been added in the eastern portion of the basin. The protection is good and the facilities decent. A shipyard, Passion Marine, is on-site and provides all routine repairs.

- Maximum length: 13.70 m
- Total berths/visitor berths: 106/16
- Depth: 2 m
- Services: water and electricity, gasoline and diesel, restrooms and showers, toilet pump-out, laundry, launching ramp, boat-building and boat-repair shop, haul-out equipment, masting post, wireless Internet.

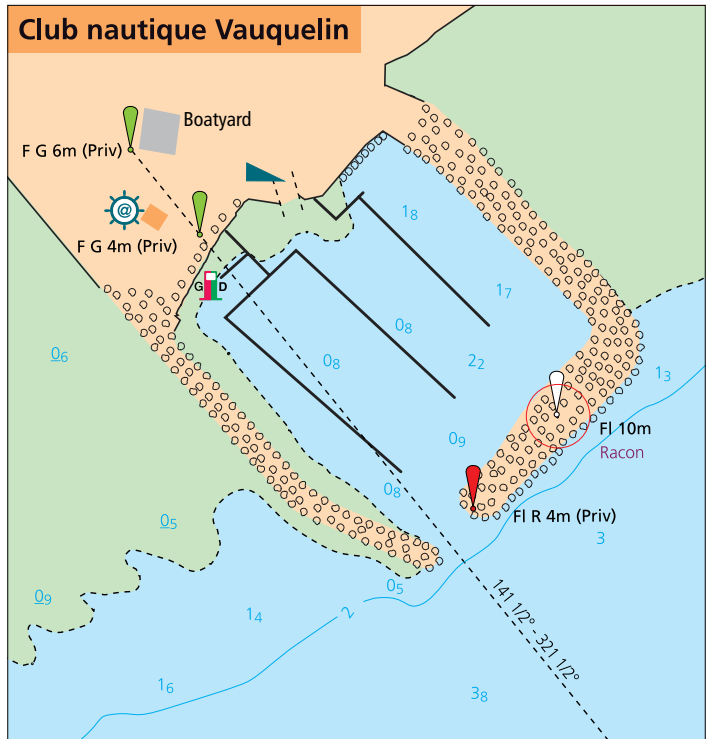


Marina de Portneuf.





Club nautique Vauquelin.



QUEBEC CITY AREA

NAVIGATION

The ebb current, together with a strong north/northeast wind can make the water unpleasantly choppy near the Quebec bridges. The flood current lasts around 5 h at Quebec City versus 7 h for the ebb current. At the Quebec Bridge, the St. Lawrence is less than a half-mile wide.

At Quebec City, pleasure boaters will find quality boating infrastructures and all specialized services they may need: shipyard, mechanics, electronic technicians, marine stores, and sailmakers.



Marina de la Chaudière VHF 68 • 418 839-7939

46°44.75'N —71°16.75'W [Red buoy (QC2)]

This marina is on the south shore, just downriver from the Quebec Bridge on the mouth of the Rivière Chaudière. Few berths at the wharf.

- Total berths/visitor berths/anchorages: 20/5/55
- Depth: 3 m
- Services: water and electricity, restrooms and showers, launching ramp.



Yacht-Club de Québec VHF 68 • 418 681-4617

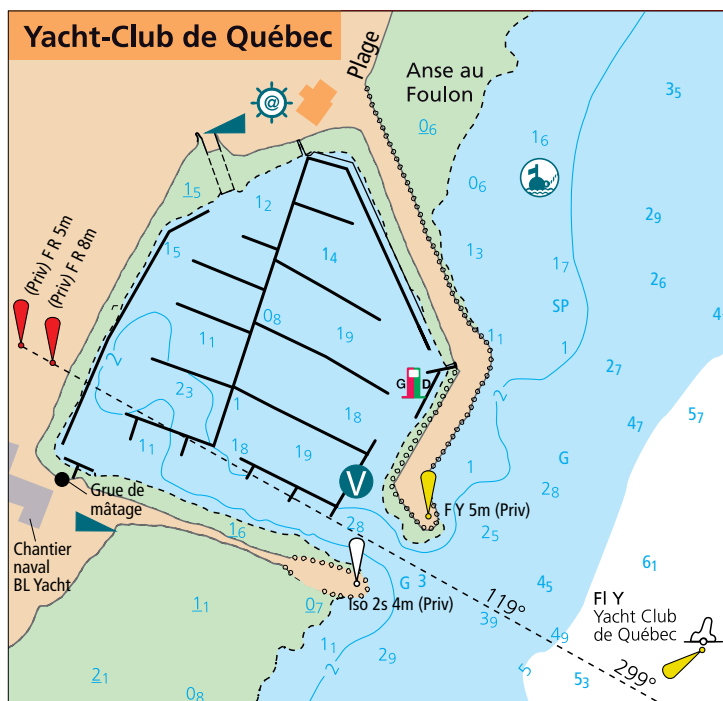
46°46.90'N —71°13.85'W [White buoy]

A white private boat buoy (yellow light) indicates the entrance channel. A line of leading lights at 299° will lead you between the two breakwaters. Lights are at the ends of the breakwaters, yellow on the east end, white on the west end. The basin is very well protected. The service wharf is to starboard when you enter. Services and infrastructures are of very good quality in a comfortable and welcoming setting. The Boulet Lemelin shipyard and marine store are nearby. The Yacht-Club de Québec is one of North America's oldest yacht clubs.

- Maximum length: 20 m
- Total berths/visitor berths: 300/15
- Depth: 2.50 m at low tide
- Services: water and electricity, gasoline and diesel, restrooms and showers, toilet pump-out, laundry, bar, restaurant, swimming pool, launching ramp for members only, masting crane, wireless Internet.



Marina de la Chaudière.





Yacht-Club de Québec.

provides good services in a pleasant atmosphere. A bike loan service will let you go for a spin on the bike path that runs by the river. Naviclub, a marine store, is in Lévis. Mobile units provide mechanical and fibreglass repair services.

- Maximum length: 13.75 m
- Total berths/visitor berths: 225/30
- Depth: 3 m at low tide
- Services: water and electricity (15A and 30 A), gasoline and diesel, restrooms and showers, toilet pumpout, laundry, restaurant, launching ramp, haul-out equipment, wireless Internet.



Parc nautique Lévy

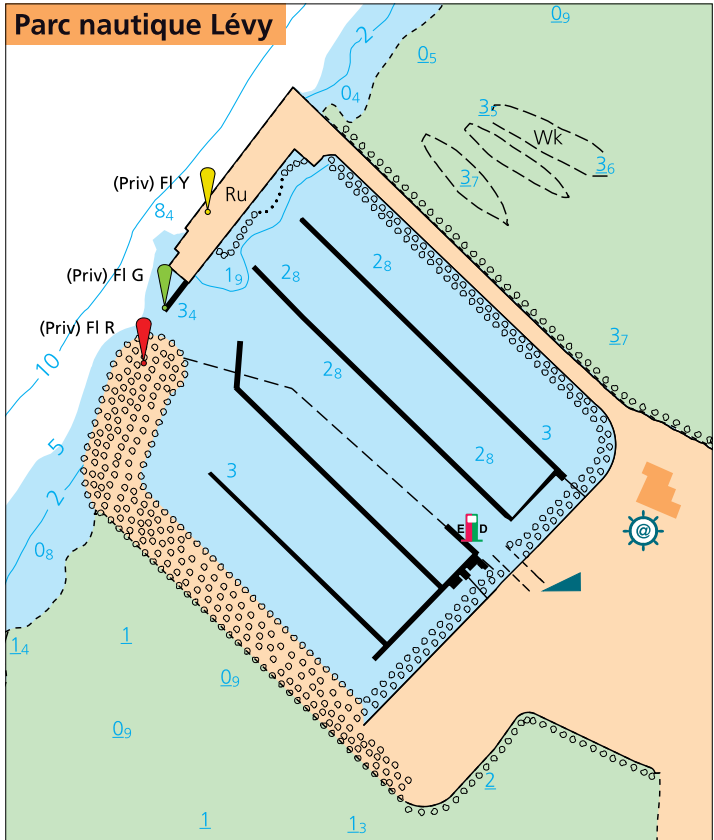
VHF 68 • 418 833-9421

46°47.50'N – 71°11.9'W

Fixed lights are on the east breakwater. The entrance channel is just right of the blue light. The entrance is partially obstructed by a landing stage that is used to deploy a boom in the event of an oil spill. The basin is well protected. This pleasure-boat harbour is fully equipped and



Parc nautique Lévy.





Port of Québec marina.



Port of Quebec marina
VHF 71 • 418 648-2233

46°49.15'N – 71°11.9'W
Blue fixed lights on each side of the wharf indicate the entrance to Louise Basin. You must go through a lock to enter the pleasure-boat basin. East of the lock is a lay-to wharf. The lock operates from 7 a.m. to half past midnight. The lock operator can be reached on channel 71. This large basin

has plenty of manoeuvring room. There are seven landing stages for large vessels 100 feet long or over, with electricity (100 A , 240 V and 208V). The Global Marine marine store is a short walk away. Service and facilities are first-rate. The marina provides a magnificent view of the historic district and is only a few minutes away on foot from the Old Quebec.

- Maximum length: 60 m
- Total berths/visitor berths: 415/100
- Depth: 3.10 m to 7 m
- Services: water and electricity (30, 50, and 100 A), gasoline and diesel, restrooms and showers, toilet pump-out, laundry, bar, restaurant, terrace, BBQ, swimming pool, launching ramp, straddle carrier, masting crane, wireless Internet.

